

imageRUNNER ADVANCE DX 6700 Series

IMPROVE BUSINESS EFFICIENCY WITH MONO A3 MULTIFUNCTION DEVICES THAT STREAMLINE WORKFLOWS WITH AUTOMATION AND CLOUD CONNECTIVITY

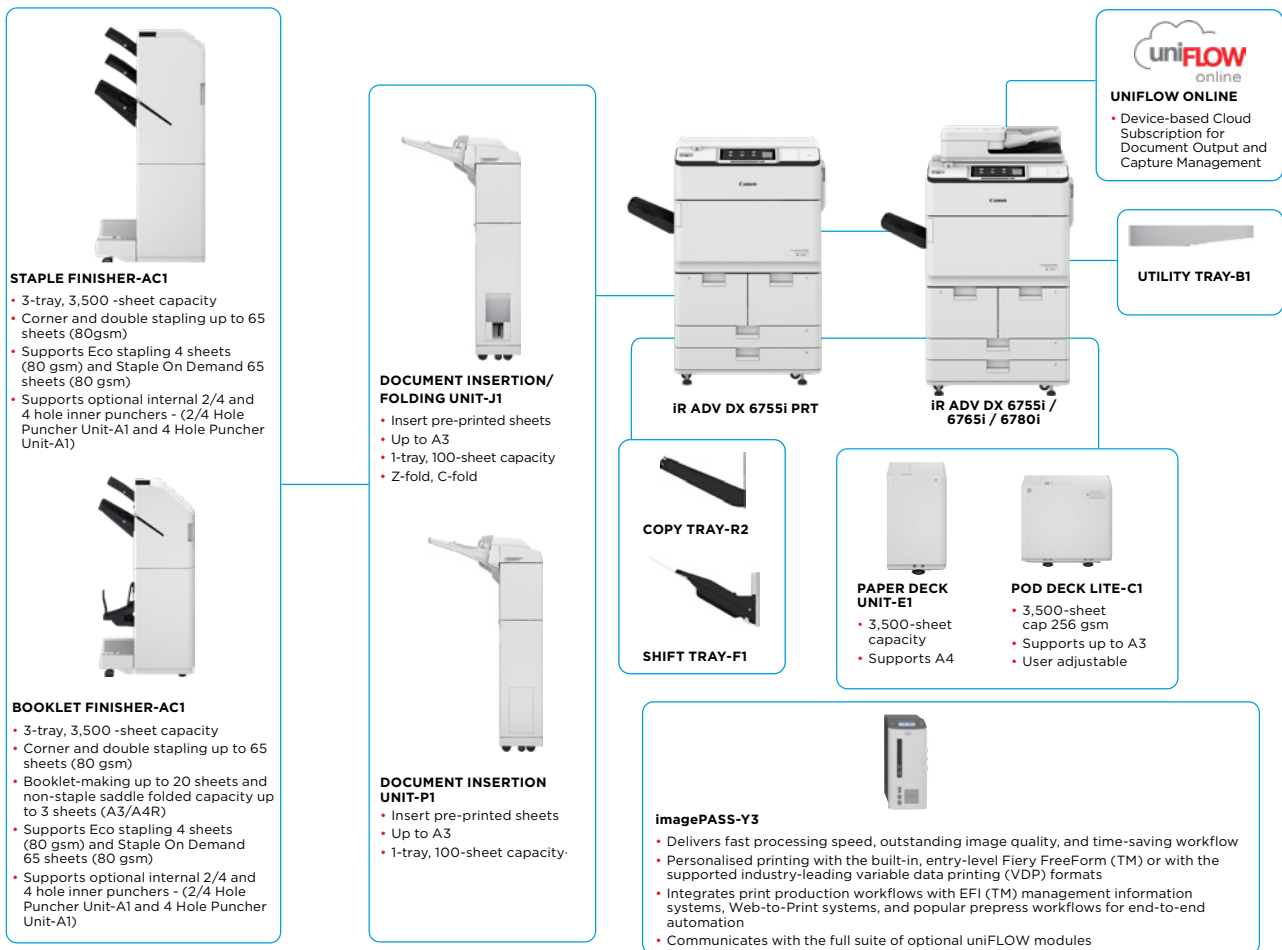
MAIN CONFIGURATION OPTIONS



Canon uniFLOW Online
Outstanding Cloud Output/Management Solution



New to the Line



This flat configuration is for illustration purpose only. For a complete list of options and the exact compatibility relationships, please refer to the online [product configurator](#).

The Unified Firmware Platform (UFP) ensures that the latest feature upgrades and protection are available, for an enhanced user experience across the entire iR ADVANCE DX portfolio.



TECHNICAL SPECIFICATIONS

imageRUNNER ADVANCE DX 6700 Series

MAIN UNIT	A3 Monochrome Laser Multifunctional	Printing from mobile and cloud	AirPrint, Mopria and Google Cloud Print, Canon PRINT Business, uniFLOW Online
Machine type	Print, Copy*, Scan*, Send*, Store and Optional Fax*		A range of software and MEAP-based solutions are available to provide printing from mobile devices or internet-connected devices and cloud-based services depending on your requirements. Please contact your sales representative for further information
Core functions	*Not available on iR-ADV DX 6755i Printer model		
Processor	1.75GHz Dual Core Processor		
Control Panel	Standard: 10.1" TFT LCD WSVGA Colour Touch panel Optional: 10.4" TFT LCD SVGA Colour Upright Touch panel for MFP Model	Fonts	PS fonts: 136 Roman PCL fonts: 93 Roman, 10 Bitmap fonts, 2 OCR fonts, Andalé Mono WT J/K/S/T ¹ (Japanese, Korean, Simplified and Traditional Chinese), Barcode fonts ²
Memory	Standard: 3.0GB RAM		¹ Optional PCL International Font Set-A1 is required. ² Optional Barcode Printing Kit-D1 is required.
Hard Disk drive	Standard*: 320GB (available disk space: 250GB), Optional: 250GB, 1TB *A different initial HDD may be used.	Print Features	Secured Print, Secure Watermark, Header/Footer, Page Layout, Two-sided Printing, Mixed Paper Sizes/Orientations, Front/Back Covers, Toner Reduction, Poster Printing, Forced hold printing, Print Date, Scheduled Printing, Printing Using a Virtual Printer
Mirroring Hard Disk Drive	Optional		
Interface Connection	Network Standard: 1000Base-T/100Base-TX/10Base-T, Wireless LAN (IEEE 802.11 b/g/n) Optional: NFC, Bluetooth Low Energy Others Standard: USB 2.0 (Host) x1, USB 3.0 (Host) x1, USB 2.0 (Device) x1; Optional: Serial Interface, Copy Control Interface	Operating System	UFRIL: Windows*7/8.1/10/Server 2008/Server 2008 R2/Server 2012/Server 2012 R2/Server 2016/Server 2019, MAC OS X (10.10 or later) PCL: Windows*7/8.1/10/Server 2008/Server 2008 R2/Server 2012/Server 2012 R2/Server 2016/Server 2019 PS: Windows*7/ 8.1/10/Server 2008/Server 2008 R2/Server 2012/Server 2012 R2/Server 2016/Server 2019, MAC OS X (10.10 or later) PPD: Windows*7/8.1/10, MAC OS X (10.9 or later) McAfee Embedded Control Software As of July, 2019.
Paper Supply Capacity (A4, 80gsm)	Standard: 4 200 sheets 100-sheet Multi-purpose tray x1 550-sheet cassette x 2 1,500-sheet Paper Deck x 2 Maximum: 7,700 sheets (with Paper Deck Unit-E1 or POD Deck Lite-C1)	COPY SPECIFICATIONS	
Paper output capacity (A4, 80gsm)	250 Sheets (with Copy Tray-R2) Maximum: 3,500 Sheets (with Staple Finisher-AC1 or Booklet Finisher-AC1)	Copy Speed	iR-ADV DX 6780i: Up to 80 ppm (A4), up to 40 ppm (A3), up to 58 ppm (A4R), up to 35ppm (A5R) iR-ADV DX 6765i: Up to 65 ppm (A4), up to 32 ppm (A3), up to 47 ppm (A4R), up to 35 ppm (A5R) iR-ADV DX 6755i/6755i PRT: Up to 55 ppm (A4), up to 32 ppm (A3), up to 40 ppm (A4R), up to 35 ppm (A5R)
Finishing capabilities	With options: Collate, Group, Offset, Staple, Saddle Stitch, Hole Punch, Eco Staple, Staple On Demand, Document Insertion, Z-fold, C-fold	First-Copy-Out Time (A4)	iR-ADV DX 6780i: Approx. 3.1 seconds or less iR-ADV DX 6765i: Approx. 3.3 seconds or less iR-ADV DX 6755i/6755i PRT: Approx. 3.3 seconds or less 600x 600
Supported media types	Multi-purpose tray: Thin, Plain, Recycled, Color, Heavy, Bond, Transparency, Label, Pre-punched, Letterhead, Tab, Tracing Paper Decks (Right/Left): Thin, Plain, Recycled, Color, Heavy, Bond, Pre-punched, Letterhead Paper Cassettes (Upper/Lower): Thin, Plain, Recycled, Color, Heavy, Bond, Pre-punched, Letterhead, Tab* *Tab Feeding Attachment-B1 is required.	Copy resolution (dpi)	Up to 9,999 copies
Supported media sizes	Multi-purpose tray: Standard size: A3, A4, A4R, A5 ¹ , A5R, A6R ² , B4, B5, B5R Custom size: 100.0 x 148.0 mm to 297.0 x 487.7 mm Free size: 100.0 x 148.0 mm to 297.0 x 487.7 mm * ¹ Supported media weights: more than 64 gsm * ² Supported media weights: more than 91 gsm Paper Decks (Right/Left): Standard size: A4, B5 Paper Cassettes (Upper/ Lower): Standard size: A3, A4, A4R, A5R, B4, B5, B5R Custom size: 139.7 x 182.0 mm to 297 x 487.7 mm	Multiple Copies	Automatic or Manual (9 Levels)
Supported media weights	Multi-purpose tray: 52 to 256 gsm Paper Deck(Right/Left): 52 to 220 gsm Paper Cassette(Upper/Lower): 52 to 220 gsm Duplex: 52 to 220 gsm	Copy Density	Variable zoom: 25% to 400% (1% Increments) Preset reduction/enlargement: 25%, 50%, 70%, 100%(1:1), 141%, 200%, 400%
Warm-up Time	Quick Start-up Mode: 4 Seconds or less* *Time from device power on to when the copy icon appears and is enabled to operate on the touch panel display From Sleep Mode: 30 Seconds or Less From Power On: 30 seconds or less* *Time from device power-on, until copy ready(not print reservation)	Magnification	Preset R/E Ratios by Area, Two-Sided, Density Adjustment, Original Type Selection, Interrupt Mode, Book to Two Pages, Two-sided Original, Job Build, N on 1, Add Cover, Insert Sheets, Different Size Originals, Page Numbering, Copy Set Numbering, Sharpness, Erase Frame, Secure Watermark, Print Date, Gutter, Print & Check, Negative/Positive, Repeat Images, Merge Job Blocks, Mirror Image, Store in Mail Box, Superimpose Image, Copy ID Card, Skip Blank Pages, Free Size Original, Reserved copy, Copy Sample
Dimensions (W x D x H)	iR-ADV DX 6780i/6765i/6755i (MFP model): 670 x 770 x 1,185 mm *With optional Upright Control Panel: 1,170 x 770 x 1,252 mm iR-ADV DX 6755i Printer model: 670 x 770 x 1,075 mm	Copy Features	Preset R/E Ratios by Area, Two-Sided, Density Adjustment, Original Type Selection, Interrupt Mode, Book to Two Pages, Two-sided Original, Job Build, N on 1, Add Cover, Insert Sheets, Different Size Originals, Page Numbering, Copy Set Numbering, Sharpness, Erase Frame, Secure Watermark, Print Date, Gutter, Print & Check, Negative/Positive, Repeat Images, Merge Job Blocks, Mirror Image, Store in Mail Box, Superimpose Image, Copy ID Card, Skip Blank Pages, Free Size Original, Reserved copy, Copy Sample
Installation Space(W x D)	Basic: 1,533 x 1,353 mm (with Multi-purpose tray/upper-right cover open + Front cover open + Copy Tray) Fully configured: 2,436 x 1,353 mm (with POD Deck Lite-C1 + Document Insertion/Folding Unit-J1 + Booklet Finisher-AC1/Staple Finisher-AC1 + Main unit Front cover open)	SCAN SPECIFICATIONS	
Weight	iR-ADV DX 6780i/6765i/6755i: Approx. 219 kg ¹ , Approx. 223 kg ² iR-ADV DX 6755i PRT: Approx. 199kg ³ ¹ Including ADF, Flat Touch Panel and the toner bottle. ² Including ADF, optional Upright touch panel and the toner bottle. ³ Including Flat panel, printer cover and the toner bottle.	Type	Single-pass Duplexing Automatic Document Feeder [2-sided to 2-sided (Automatic)] *Detect Feeder Multi Sheet Feed is supported.
PRINT SPECIFICATIONS	Including the toner bottle.	Document Feeder Paper Capacity (80 gsm)	up to 200 Sheets
Print Speed	iR-ADV DX 6780i: Up to 80 ppm (A4), up to 40 ppm (A3), up to 58 ppm (A4R), up to 35ppm (A5R) iR-ADV DX 6765i: Up to 65 ppm (A4), up to 32 ppm (A3), up to 47 ppm (A4R), up to 35 ppm (A5R) iR-ADV DX 6755i/6755i PRT: Up to 55 ppm (A4), up to 32 ppm (A3), up to 40 ppm (A4R), up to 35 ppm (A5R)	Acceptable Originals and weights	Platen: Sheet, Book, and 3-Dimensional Objects Document Feeder media weight: 1-sided scanning: 38 to 220 gsm 2-sided scanning: 38 to 220 gsm *An acceptable weights of A6R or smaller is 50 to 220gsm.
Print Resolution (dpi)	1,200 x 1,200	Supported media sizes	Platen max. scanning size: up to 297.0 x 431.8 mm Document Feeder media size: A3, A4, A4R, A5, A5R, A6R, B4, B5, B5R, B6R, Custom size: 70.0 x 139.7 mm to 304.8 x 431.8 mm
Page description languages	Standard: UFRIL, PCL6, Optional: Adobe®PostScript®3™	Scan Speed (ipm, BW/CL, A4)	1-sided Scanning: 135/135 (300 x 300 dpi, send), 80/80 (600 x 600 dpi, copy) 2-sided Scanning: 270/270 (300 x 300 dpi, send), 160/90 (600 x 600 dpi, copy)
Direct Print	Supported file types: PDF, EPS, TIFF/JPEG, and XPS	Scan Resolution (dpi)	Scan for Copy: 600 x 600 Scan for Send: (Push) 600 x 600 (SMB/FTP/WebDAV/IFAX), (Pull) 600 x 600 Scan for Fax: 600 x 600
		Pull Scan Specifications	Colour Network ScanGear2. For both TWAIN and WIA Supported OS: Windows*7/8.1/10/Server 2008/Server 2008 R2/Server 2012/Server 2012 R2/Server 2016
		Scan Method	Push Scan, Pull Scan, Scan to Box, Scan to Advanced Space, Scan to Network, Scan to USB Memory Key, Scan to Mobile device, Scan to cloud (uniFLOW - Online)
		SEND SPECIFICATIONS	
		Destination	Standard: E-mail/Internet FAX (SMTP), SMB3.0, FTP, WebDAV, Mail Box Optional: Super G3 FAX, IP Fax
		Address Book	LDAP (2000)/Local (1600)/Speed dial (200)
		Send resolution (dpi)	Push: up to 600 x 600 Pull: up to 600 x 600



TECHNICAL SPECIFICATIONS

imageRUNNER ADVANCE DX 6700 Series

Communication protocol	File: FTP(TCP/IP), SMB3.0 (TCP/IP), WebDAV E-mail/Fax: SMTP, POP3	ENVIRONMENTAL SPECIFICATIONS	
File Format	Standard: TIFF, JPEG, PDF(Compact, Searchable, Apply policy, Optimize for Web, PDF/A-1b, Trace & Smooth, Encrypted, Device Signature, User Signature), XPS(Compact, Searchable, Device Signature, User Signature), Office Open XML (PowerPoint, Word)	Operating Environment	Temperature: 10 to 30°C Humidity: 20 to 80 % RH (Relative Humidity)
Universal Send Features	Original Type Selection, Two-sided Original, Book to Two Pages, Different-size Originals, Density Adjustment, Sharpness, Copy Ratio, Erase Frame, Job Build, Delayed Send, Preview, Job Done Notice, File Name, Subject/Message, Reply-to, E-mail Priority, TX Report, Original Content Orientation, Skip Blank Pages	Power Source	220-240V, 50/60Hz, 10A
FAX SPECIFICATIONS		Power consumption	Maximum: Approx. 2,400 W Copying (with DADF continuous scan): Approx. 1,290 W ¹ Standby: Approx. 256 W ¹ Sleep mode: Approx. 0.9 W ²
Maximum Number of Connection Lines	2	Typical Electricity Consumption (TEC)*	iR-ADV DX 6780i: 1.61 kWh *As per USA Energy Star 3.0
Modem Speed	Super G3: 33.6 kbps G3: 14.4 kbps	Noise levels	Sound Power Level (LWA,m) Active (1-sided) iR-ADV DX 6780i: 7.3 B, Kv 0.3 B iR-ADV DX 6765i: 7.2 B, Kv 0.3 B iR-ADV DX 6755i/6755i PRT: 7.2 B, Kv 0.3 B *Reference value: measured only one unit with ISO7779, described with ISO9296 (2017)
Compression Method	MH, MR, MMR, JBIG		Sound Pressure (LpAm) Bystander's position: Active (1-sided): iR-ADV DX 6780i: 59 dB* iR-ADV DX 6765i: 58 dB* iR-ADV DX 6755i: 57 dB* iR-ADV DX 6755i PRT: 58 dB* Standby: 37 dB* *Reference value: measured only one unit with ISO7779, described with ISO9296 (2017)
Resolution (dpi)	400x400 (Ultra Fine), 200x400 (Super Fine), 200x200 (Fine), 200x100 (Normal)	CONSUMABLES	
Sending/Receiving Size	Sending: A3, A4, A4R, A5 ¹ , A5R ¹ , B4, B5 ² , B5R ¹ Receiving: A3, A4, A4R, A5R, B4, B5, B5R ¹ Sent as A4 ² Sent as B4 short	Toner Cartridge	C-EXV 36 Black Toner
FAX memory	Up to 30,000 pages (2,000 jobs)	Toner (Estimated Yield @6% Coverage)	56,000 pages
Speed dials	Max. 200	SOFTWARE AND PRINTER MANAGEMENT	
Group dials/destinations	Max. 199 dials	Tracking and reporting	For detailed information please visit our website https://www.canon-europe.com/business/ Universal Login Manager (ULM) uniFLOW Online Express* *For more information, please refer to uniFLOW Online Express/uniFLOW Online Technical Datasheets
Sequential broadcast	Max. 256 addresses	Remote management tools	iW Management Console eMaintenance Content Delivery System
Memory backup	Yes	Scanning software	Network ScanGear
Fax Features	Sender's Name (TTI), Selecting the Telephone Line (when sending fax), Direct Send, Delayed Send, Preview, Job Done Notice, TX Report, Interrupt Transmission, Sequential Broadcasting, Password/Subaddress Sending, Confidential Mailbox, 2 on 1 Log	Optimisation tools	Canon Driver Configuration Tool NetSpot Device Installer
STORE SPECIFICATIONS		Platform	MEAP (Multifunctional Embedded Application Platform)
Mail Box (Number supported)	100 User Inboxes, 1 Memory RX Inbox, 50 Confidential Fax Inboxes Maximum 30,000 Pages (2,000 jobs) Stored	Document Administration	Kofax Power PDF (Optional)
Advanced Space	Communication Protocol: SMB or WebDAV SUPPORTED CLIENT PC: WINDOWS* 8/1/10 CONCURRENT CONNECTIONS (MAX.): SMB:64, WEBDAV:3	FIERY PRINT CONTROLLER SPECIFICATIONS	
Advanced Space available disc space	Standard:16 GB (With option: max. 480GB.)	Optional/Standard	Optional on all models
Advanced Space Features	Authentication for Advanced Space Log-in, Sort Function, Printing a PDF File with a Password, imageWARE Secure Audit Manager Support, Search, File Preview, Authentication Management, Open to public, URI TX, Backup/Restore	Name	Canon imagePASS-Y3 V1.1 (Server)
SECURITY SPECIFICATIONS		Print Resolution (dpi)	1200 x 1200, 600 x 600
Authentication and Access Control	User Authentication (Picture Login, Picture and PIN Login, Card Login, Username and Password Login, Function Level Login, Mobile Login), Department ID Authentication (Department ID and PIN Login, Function Level Login), uniFLOW Online Express (PIN Login, Picture Login, Picture and PIN Login, Card Login, Card and PIN Login, Username and Password Login, Department ID and PIN Login, Function Level Login), Access Management System (Access Control)	Page Description Language(s)	PCL6, Adobe PostScript 3
Document Security	Print Security (Secure Print, Encrypted Secure Print, Forced Hold Printing, uniFLOW Secure Print*), Receive Data Security (Confidential Fax Inbox Forwarding Received Documents Automatically), Scan Security (Encrypted PDF, Device Signature PDF/XPS, User Signature PDF/XPS, Adobe LiveCycle® Rights Management ES2.5 Integration), BOX Security (Mail Box Password Protected, Advanced Space Access Control), Send Data Security (Setting for requesting password input per transmission, Restricted E-mail/File send functions, Confirming FAX number, Allow/Restrict Fax Driver Transmissions, Allow/Restrict Sending from History, S/MIME Support), Document Tracking (Secure Watermark) ¹ Requires uniFLOW Online / uniFLOW	Memory	8GB (2 x4GB)
Network Security	TLS 1.3, IPsec, IEEE802.1X authentication, SNMP V3.0, Firewall Functionality (IP/MAC Address Filtering), Dual Network Support (Wired LAN/Wireless LAN, Wired LAN/Wired LAN), Disabling Unused Functions (Enabling/Disabling Protocols/Applications, Enabling/Disabling Remote UI, Enabling/Disabling USB Interface), Communication Line Separation (G3 FAX, USB Port, Advanced Space, Scan and Send -Virus Concerns for E-mail Reception)	Hard Disk Drive	500 GB SATA
Device Security	Protecting HDD Data (HDD Data Encryption (FIPS140-2 Validated), HDD Data Overwrite Erase, HDD Lock), Standard HDD Initialize, Trusted Platform Module (TPM), Job Log Conceal Function, Protecting MFD Software Integrity, Checking MFD Software Integrity (Verify System at Startup, Runtime Intrusion Detection), Comply IEEE2600.2 (Common Criteria Certification) (TBD)	Processor Speed	Intel Pentium G4400 (3.3GHz)
Device Management and Auditing	Administrator Password, Digital Certificate And Key Management, Audit Log, Cooperating with External Security Audit System (Security Information and Event Management), Image Data Logging, Security Policy Setting	System	FS350 Pro
		Fonts	PS: 138 Fonts PCL: 113 Fonts
		Supported Operating Systems	Windows 7 64 bit/Windows 8.1 64 bit/Windows 10 64 bit/Windows Server 2008 R2 64bit only/Windows Server 2012 64bit only (Only Printer driver support)/Windows Server 2012 R2 64bit only/Windows Server 2016 R2 64 bit only, MAC OS (10.11, 10.12, 10.13, 10.14)
		Interface	2 x Ethernet (1000Base-T/100Base-TX/10Base-T), USB 3.0 x 2 (rear), x 3 (front on Fiery Quick Touch TM), USB 2.0 x 4 (rear)
		Network protocols	TCP/IP (FTP, SMTP, POP, HTTP, SNMP, LDAP, SLP, SMB, LPD, IPP, WS-Discovery, Bonjour, Direct Mobile Printing, Port9100, SNT, 802.1X, DHCP, DNS, NTP)
		Direct Print VDP	PDF1.7, EPS, TIFF6, JDF1.4/JMF (Optional)
		Fiery Print Controller Standard Features	FreeForm v1, v2.1, PPML, PDF/VT-1, PDF/VT-2, Creo VPS
		Fiery Print Controller Options	Fiery Command WorkStation/Paper Catalog, Fiery Remote Scan/Fiery Hot Folders & Virtual Printers/Fiery JDF
		HW Platform	Fiery Impose/Fiery Compose/Fiery Impose and Compose/Removable HDD kit/ Fiery Image Viewer
		BASE OS	NX One
		Power source	Windows 10 IoT Enterprise 2019 LTSC
		Maximum Power consumption	AC100-240V, 50Hz/60Hz, 3.0A (100V) - 1.5A (240V) 53 W
		DIMENSIONS (W X D X H)	203 x 248 x 384 mm
		Weight	Server unit only: Approx. 5.9kg



TECHNICAL SPECIFICATIONS

imageRUNNER ADVANCE DX 6700 Series

PAPER SUPPLY OPTIONS

Paper Deck Unit-E1

Paper Capacity: 3,500 sheets (80 gsm)
Paper Type: Thin, Plain, Recycled, Color, Heavy, Bond, Pre-punched, Letterhead
Paper Size: A4, B5
Paper Weight: 52 to 256 gsm
Power Source: from the Main Unit
Dimensions (W x D x H): 340 x 630 x 572 mm (attached to the main unit)
Weight: Approx. 34 kg

POD Deck Lite-C1

Paper Capacity: 3,500 sheets (80 gsm)
Paper Type: Thin, Plain, Recycled, Color, Heavy, Tracing, Bond, Transparency, Label, Pre-punched, Letterhead, Tab
Paper Size: A3, A4, A4R, B4, A5R, B5, B5R, Custom size: 139.7 x 182.0 mm to 297.0 to 487.7 mm
Paper Weight: 52 to 256 gsm
Power Source: 220-240V, 50/60Hz, 1.2A
Dimensions (W x D x H): 633 x 686 x 574 mm (attached to the main unit)
Weight: Approx. 68 kg

OUTPUT OPTIONS*

Copy Tray-R2

*Paper capacity may vary with different of paper type/size.
Provides a simple tray for basic output needs.
Capacity: 250/100 sheets (1-sided/2-sided, 80 gsm)
Dimensions (W x D x H): 420 x 382 x 175 mm

Staple Finisher-AC1

Tray Capacity (with 80gsm paper):
Upper Tray: A4, A5, A5R, A6R, B5: 250 sheets
A3, A4R, B4, B5R: 125 sheets
Mid Tray: Same as upper tray
Lower Tray: A4, A5, A5R, B5: 3,000 sheets
A3, A4R, B4, B5R: 1,500 sheets
A6R: 250 sheets
Paper Weight: 52 to 256 gsm
Staple Position: Corner, Double
Staple Capacity:
A4, B5: 65 sheets (52 to 90 gsm)
A3, A4R, B4: 40 sheets (52 to 90 gsm)
Eco Staple: A3, A4
5 sheets (52 to 64 gsm)
4 sheets (65 to 81.4 gsm)
3 sheets (82 to 105 gsm)
Staple On Demand: 65 sheets
Power supply: From the main unit
Dimensions (W x D x H): 656 x 623 x 1,195 mm (when the extension tray and rotary tray are extended)
Weight: Approx. 36 kg

Booklet Finisher-AC1

(Includes the above Staple Finisher-AC1 basic staple specifications.)
Saddle Stitch paper size: A3, A4R, B4, Custom Size (195.0 x 270.0 mm to 297.0 x 431.8 mm)
Saddle Stitch Staple Capacity: 20 sheets x 10 sets (52 to 81.4 gsm) (including 1 cover sheet up to 256 gsm)
Non Staple Folded Bunch Capacity: 3 sheets (52 to 105 gsm)
Power supply: From the main unit
Dimensions (W x D x H): 656 x 623 x 1,195 mm (when the extension tray and rotary tray are extended)
Weight: Approx. 60 kg

2/4 HOLE PUNCHER UNIT-A1

(Requires either the Staple Finisher-AC1 or Booklet Finisher-AC1)
Two or Four Holes
Acceptable Punch Paper Weight: 52 to 256 gsm
Acceptable Punch Paper Size:
Two holes A3, A4, A4R, A5, B4, B5, B5R
Four holes A3, A4
Power Source: From the finisher

4 Hole Puncher Unit-A1

(Requires either the Staple Finisher-AC1 or Booklet Finisher-AC1)
Four Holes
Acceptable Punch Paper Weight: 52 to 256 gsm
Acceptable Punch Paper Size:
Four holes A3, A4, A4R, A5, B4, B5, B5R
Power Source: From the finisher

Document Insertion Unit-P1

(Requires either the Staple Finisher-AC1 or Booklet Finisher-AC1)
Number of trays: 1
Tray Capacity: 100 Sheets (with 80 gsm paper)
Acceptable Paper Type: Thin, Plain, Recycled, Color, Heavy, Coated, Bond, Letterhead, Tab
Acceptable Paper Sizes: A3, A4, A4R, B4, B5, B5R
Acceptable Paper Weight: 60 to 256 gsm
Power Source: 100-240V, 50/60Hz, 1.0A
Dimensions (W x D x H): 247 x 679 x 1,242 mm (attached to the device: width excluding document tray)
Weight: Approx. 40 kg

Document Insertion / Folding Unit-J1

(Requires either the Staple Finisher-AC1 or Booklet Finisher-AC1)
Number of trays: 1
Supported Folding Type: Z-Fold, C-Fold
Acceptable Paper Type:
Insertion Unit: Thin, Plain, Recycled, Color, Heavy, Coated, Bond, Letterhead, Tab
Z-Fold/C-Fold: Thin, Plain, Recycled, Color
Acceptable Paper Sizes:
Insertion Unit: A3, A4, A4R, B4, B5, B5R
Z-Fold: A3, A4R, B4
C-Fold: A4R
Acceptable Paper Weight:
Insertion Unit: 60 to 256 gsm
Z-Fold/C-Fold: 60 to 105 gsm
Output Capacity (with 80 gsm paper):
Insertion: 100 Sheets
Z-Fold*: A3, B4: 30 sheets (80 gsm)
A4R: 10 sheets
C-fold: A4R: 40 sheets (80 gsm)
*Z-Fold output to the Staple Finisher-AC1 or Booklet Finisher-AC1
Power Source: 100-240V, 50/60Hz, 1.0A
Dimensions (W x D x H): 247 x 679 x 1,242 mm (attached to the device: width excluding document tray)
Weight: Approx. 76 kg

HARDWARE ACCESSORIES

Card Readers

Various card readers available e.g. MiCard Plus.
Please contact local Canon Office for more details.
Copy Card Reader-F1
Copy Card Reader Attachment-A4

Others

Upright Control Panel-J1
Utility Tray-B1
Tab Feeding Attachment Kit-B1
Shift Tray-F1
Numeric Keypad-A1
Finisher Jogger Kit-A1

SECURITY OPTIONS

Data security

2.5inch/250GB HDD-N1
2.5inch/1TB HDD-P1
HDD Mirroring Kit-J1

SYSTEM AND CONTROLLER OPTIONS

Print Accessories

PCL International Font Set-A1
PS Printer Kit-BC1

Barcode Printing

Barcode Printing Kit-D1

Efi-Fiery Based Controller

imagePASS-Y3 V1.1

Efi-Fiery Based Controller Options

Fiery Impose
Fiery Compose
Fiery Impose and Compose
Fiery ImageViewer
Removable HDD Kit-B6

System Accessories

Serial Interface Kit-K3
NFC Kit-E1
Copy Control Interface Kit-A1
Connection Kit-A2 for Bluetooth LE

Fax Accessories

Super G3 FAX Board-AS1
Super G3 2nd Line Fax Board-AS1
Remote Fax Kit-A1
IP FAX Expansion Kit-B1

OTHER OPTIONS

Accessibility Accessories

ADF Access Handle-A1
Voice Guidance Kit-G1
Voice Operation Kit-D1

Staple Cartridge

Staple Cartridge-X1
Staple Cartridge-Y1

Software & Solutions



Certifications and compatibility



Canon Ireland

3006 Lake Drive

Citywest, Saggart

Co. Dublin, Ireland

Telephone No: 01 2052400

Facsimile No: 01 2052525

canon.ie

Canon (UK) Ltd

5 The Square

Stockley Park

Uxbridge

UB11 1ET

Tel: 01895 648 000

www.canon.co.uk

Canon Inc.

canon.com

Canon Europe

canon-europe.com

English edition

© Canon Europa N.V., 2020

